

# Mathematics

## \*24 Hour Clock\*

Digital clock and watches often show the time using the 24 hour clock 07:00 13:00

Find 5 things in the home that have digital clocks.

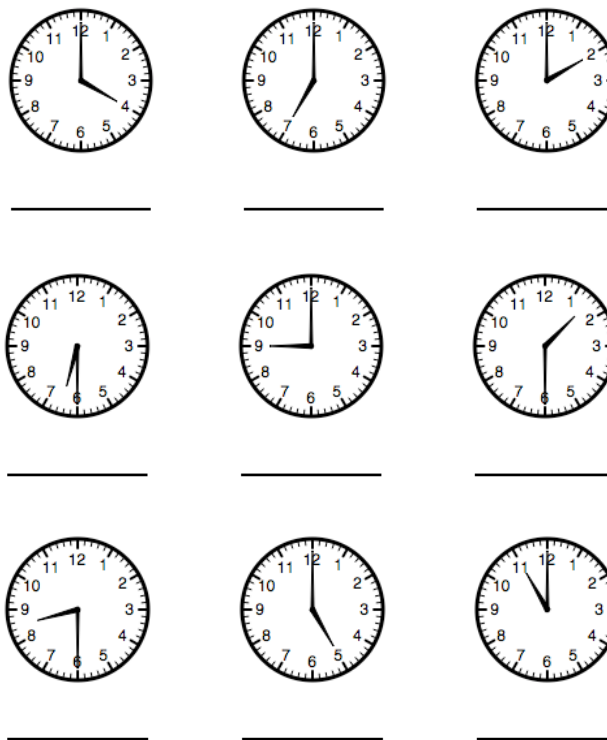
- 1.
- 2.
- 3.
- 4.
- 5.

Change these 12 hour times to 24 hour digital times.

- 1.) 7.30 a.m.      \_\_\_\_:\_\_\_\_
- 2.) 10.30 p.m.      \_\_\_\_:\_\_\_\_
- 3.) 2 p.m.      \_\_\_\_:\_\_\_\_
- 4.) 3 a.m.      \_\_\_\_:\_\_\_\_
- 5.) 9.15 p.m.      \_\_\_\_:\_\_\_\_
- 6.) 4.45 a.m.      \_\_\_\_:\_\_\_\_
- 7.) midday      \_\_\_\_:\_\_\_\_
- 8.) midnight      \_\_\_\_:\_\_\_\_

# Mathematics

## \*Telling the Time\*



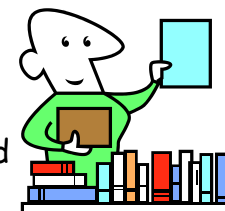
Write the time for each clock face.  
You may use words - **o'clock**, **half past**  
or numbers 3.00, 4.30  
How do we show morning or afternoon times?  
What do **a.m.** and **p.m.** stand for?

### Maths

Practise your skills using Mathletics. Spend around 15 minutes each night on Mathletics to brush up your basic facts knowledge. Check out your group activities. Work on your NEXT LEARNING STEPS on your wiki page.

### Reading Log

Keep up your daily reading log - write down how many pages you read each evening.



Date	Title
28th	
29th	
30th	

### From the teachers:

This week we will be studying what ANZAC means. Thank you those who brought in resources to share last week.

Our syndicate sports day is on Wednesday. With the wetter weather you may wish to bring a change of clothes to wear for sports.

Keep up the good work on our LITTERLESS LUNCH day every Tuesday.

Remember Wednesdays are WOW days.

Year 4 Homework

Week 1

Please return to school on FRIDAY 1st May Parent/Guardian\_\_\_\_\_